

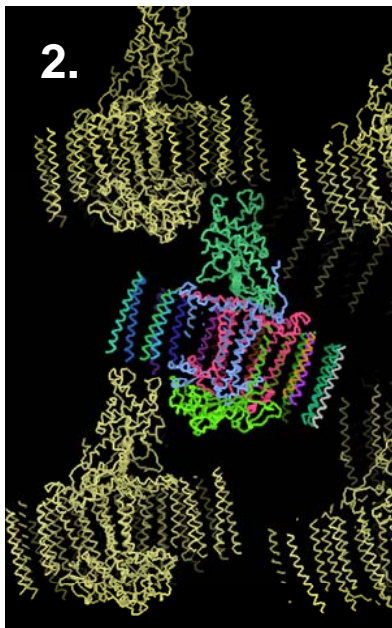
# Progress with Crystallisation of Purple Bacterial LH Complexes

## Scientific Achievement

Good progress is being made in crystallising a range of integral membrane LH complexes

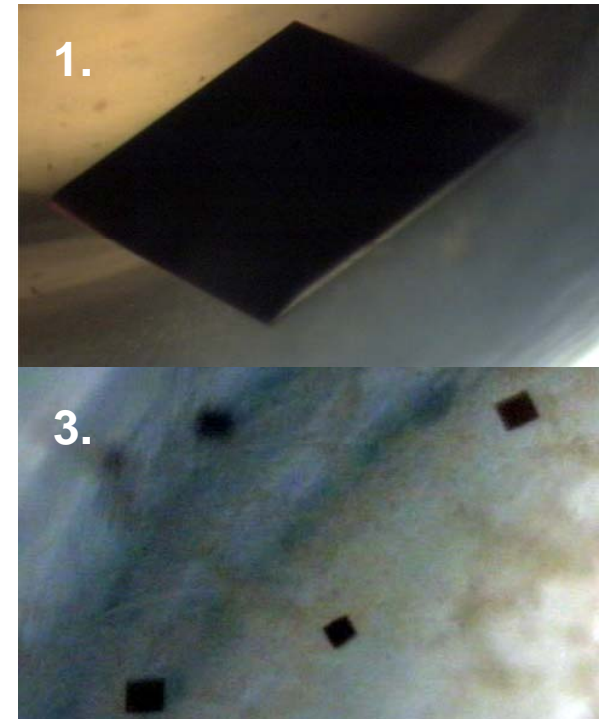
## Significance and Impact

The first requirement in understanding the detailed mechanisms of energy transfer in LH is 3-D structural information



## Research Details

1. Large, highly resolving crystals of LH2 from *Rps. acidophila* have been grown for joint neutron diffraction experiments with Dean Miles at Oak Ridge NL
2. The crystal packing of core complexes from *Alc. vinosum* has been determined by a molecular replacement solution.
3. The first crystals of the unusual RCLH from *Roseiflexus castenholzii* have been produced in collaboration with the Blankenship group



U.S. DEPARTMENT OF  
**ENERGY**

Office of  
Science



University  
of Glasgow



Washington  
University in St. Louis