

Advances in design and assembly of light-harvesting protein maquettes

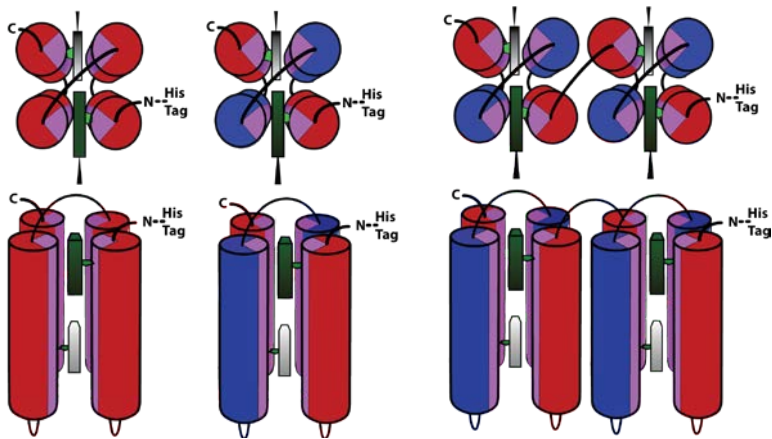
4 helix

8 helix

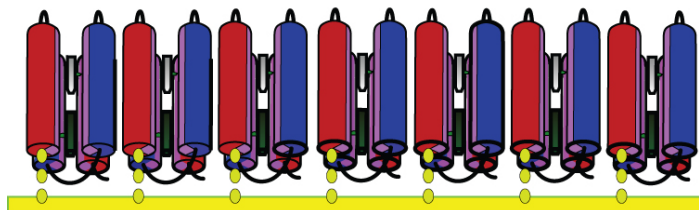
Original design

Binary charge patterning

Binary charge patterning

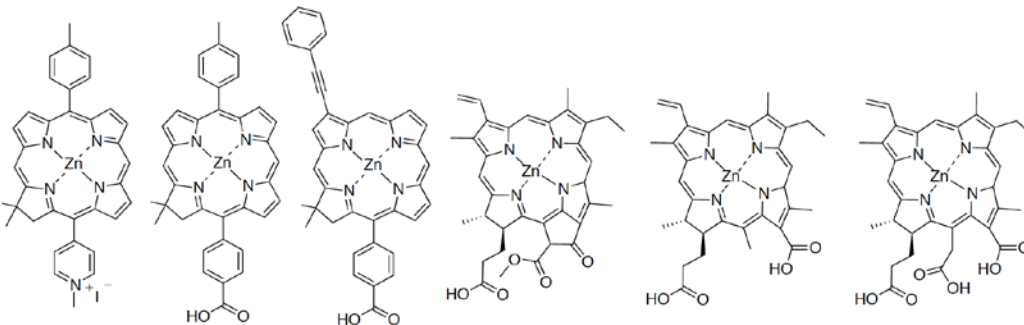


Charge complementary His tagged maquettes on NiNTA gold and glass surfaces



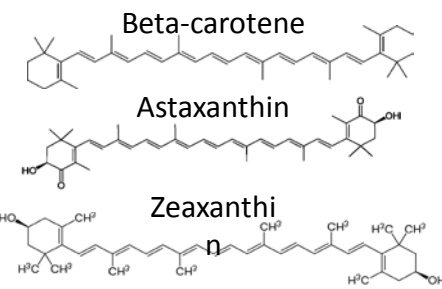
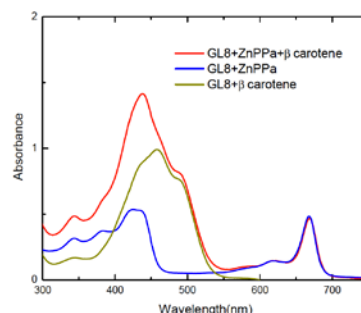
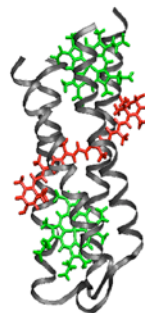
With Neil Hunter, U.Sheffield.

High affinity Zn Chlorins in to 4 and 8 helix maquettes



Chlorins by J. Lindsey, NCSU

Co-incorporation of Carotenoid and Chlorins in 8 helix maquette



With H. Frank, U. Conn.

Photo-protection of Chlorins in O₂ by Carotenoids in 4 helix maquettes

